

# LOVELY HOME WITH LOTS OF EXTRAS!



**409 E. Spencer St. Saint Francis, KS**



Spacious Living & Dining Rooms

## MAIN-FLOOR FEATURES

- ▶ **2,192 Sq. Ft. Living Area**
- Living Room w/gas fireplace
- Dining Room
- Crown Molding
- Kitchen (Appl. Included)
- Bay & Multiple Windows
- Family Room w/gas fireplace
- 2 Bedrooms/2.5 Baths
- Craft/Computer Room
- Laundry w/Washer & Dryer

## BASEMENT FEATURES

- ▶ **880 Sq. Ft. Living & Storage**
- Bedroom & Office Area
- Kitchen w/Gas Stove
- Family Room/Play Area
- Bathroom/Large Shower

## OTHER FEATURES

- ▶ Enclosed Porch
- ▶ Protected Courtyard
- ▶ Attached Garage
- ▶ Attached Garden/Yard Shed
- ▶ Fenced Backyard
- ▶ Partial Underground Sprinklers
- ▶ New Roof
- ▶ Lots of Closets & Storage
- ▶ Lots of New Flooring

This gorgeous home is perfect for a family or for those who like to entertain family and friends! You'll enjoy the large living room with bay window, fireplace, and built-in bookshelves and the spacious dining room, or choose to hang-out in the open kitchen/family room! You must see to appreciate this home!



Custom Kitchen



Cozy Family Room



Large Master Bed & Bath



Large Guest Bedroom

**2011 TAXES: \$1,965.32**

**LISTED PRICE: \$98,500**

Rodney W. Shay, Listing Broker

785-332-2566 office

785-332-5656 cell



# SHAY REALTY, INC.

107 E. Washington St., St. Francis, KS 67756 [www.shayrealty.com](http://www.shayrealty.com)

This information, while not guaranteed, is from sources believed to be reliable.

## Additional Photos of 409 E. Spencer St., Saint Francis, KS



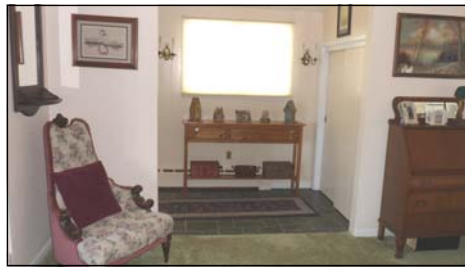
Another View of Master Bedroom



View of Back of Home



Another View of Kitchen



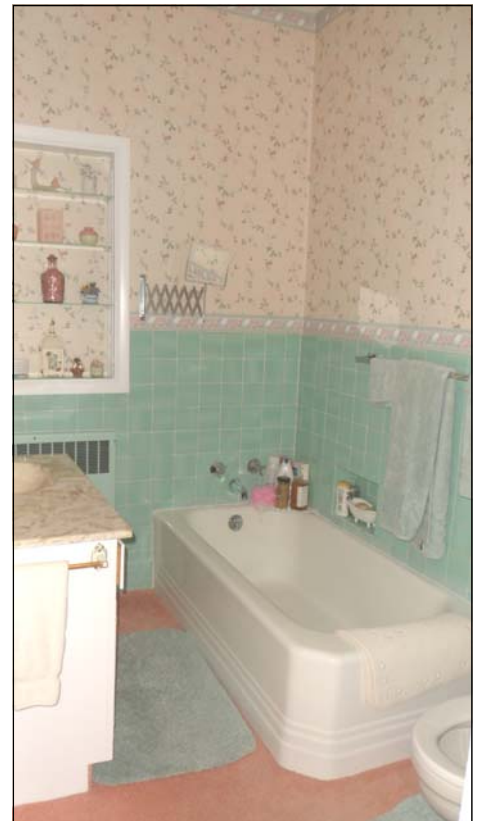
View of Foyer from Living Room



Basement Bedroom



Basement Office



One of 2.5 Main Floor Bathrooms



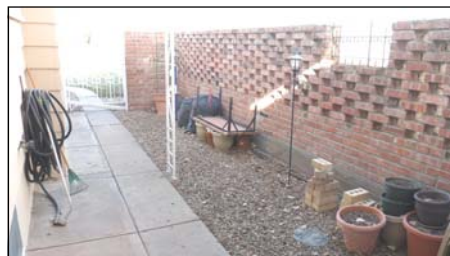
Basement Family Room



Enclosed East Porch



Grilling Area South of Porch



Courtyard Area North of Porch



View of Backyard and Rock Wall